

# MONTHLY MEMBERSHIP PROGRESS REPORT

LOCATION INDIA

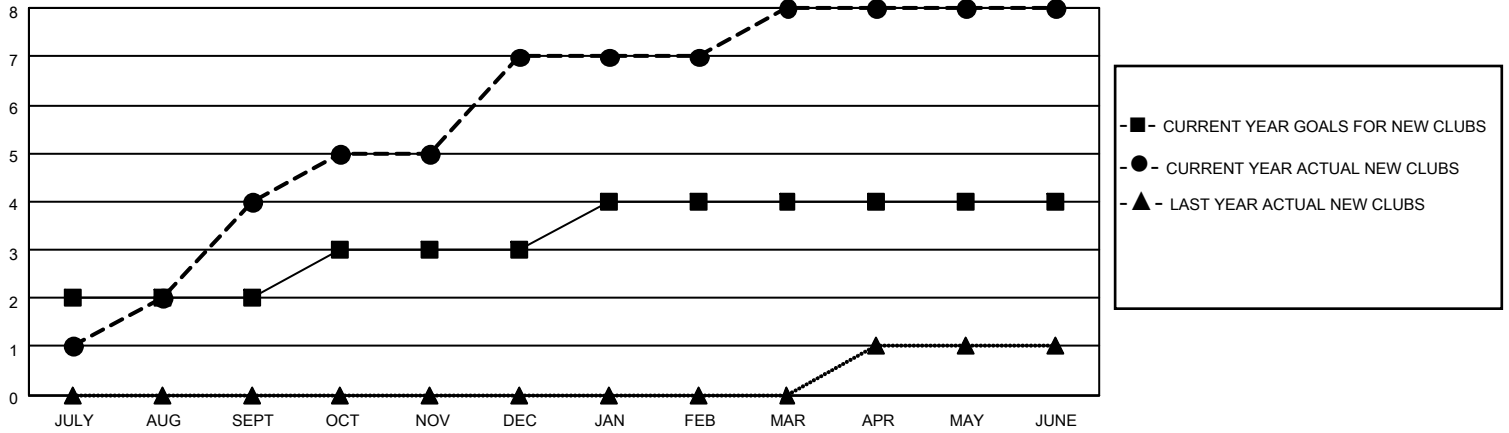
District 320 E

Results as of: 6/30/2021

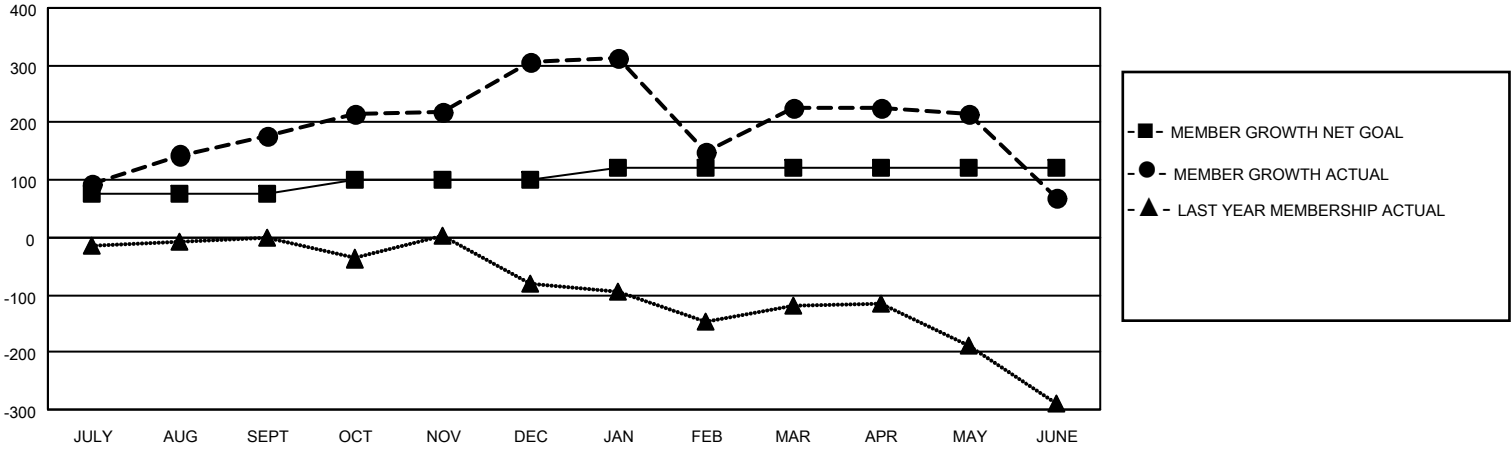
Clubs			
RESULTS FOR 2020-2021			
QUARTER	NEW CLUB GOAL	NEW CLUBS	DROPPED CLUBS
JULY/AUG/SEPT	2	4	0
OCT/NOV/DEC	1	3	0
JAN/FEB/MAR	1	1	11
APR/MAY/JUNE	0	0	0

Members			
RESULTS FOR 2020-2021			
QUARTER	MEMBER GROWTH NET GOAL	MEMBER GROWTH ACTUAL	DROPPED MEMBERS ACTUAL (including transfers)
JULY/AUG/SEPT	75	241	61
OCT/NOV/DEC	25	208	75
JAN/FEB/MAR	20	148	180
APR/MAY/JUNE	0	80	231

**GOALS AND ACTUAL NEW CLUBS CUMULATIVE**



**GOALS AND ACTUAL MEMBERS CUMULATIVE**



**DROPPED CLUBS: 11**

**48 CLUBS OF 73 ADDED 1 OR MORE NEW MEMBERS**

**GENDER DISTRIBUTION**

MALE            2,035 (68.91%)  
 FEMALE        918 (31.09%)

**DROPPED MEMBERS**

[CLICK HERE FOR CUMULATIVE MEMBERSHIP DATA](#)

DECEASED	20
CLUB CANCELLED	179
OTHER	348
<b>TOTAL</b>	<b>547</b>

TOTAL FAMILY UNIT MEMBERS	2,048
FAMILY MEMBERS PAYING HALF DUES	1,241